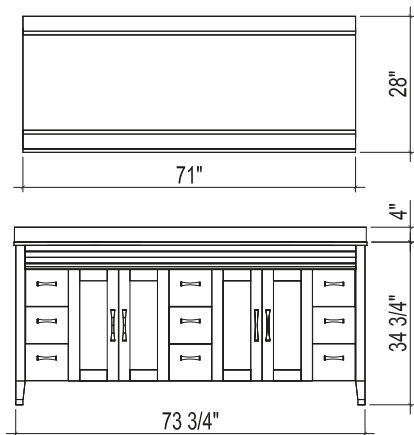
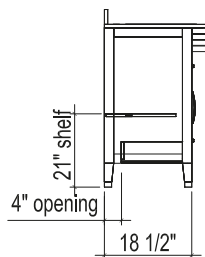
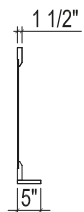


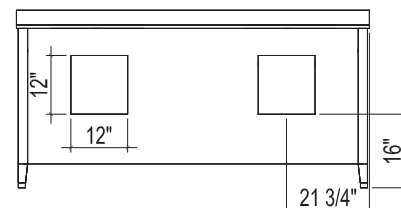
Roughing-In Dimensions / Mesures Relatives aux Points de Raccordement / Medidas Aproximadas



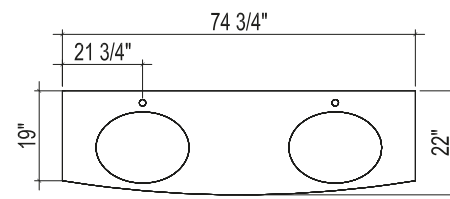
1
4 Front View



2
4 Left Elevation



3
4 Rear Elevation



4
4 Plan View

Note: Height may vary depending on material of top

Note: La hauteur peut varier en fonction du matériau du top

Nota: La altura puede variar dependiendo del material de los mejores



USA & CANADA

Recommended Accessories / Accessoires Recommandés / Accesorios Recomendados

- | | | | | |
|----------|---------|-----------|------------------------|-----------------------|
| - MCG 22 | - MC 27 | - SS 12 | - Recline short faucet | - Bamboo faucet |
| - MC 22 | - SS8 | -AJ linen | - Classic faucet | - Curviz short faucet |

STEP #1

- With assistance, place vanity (A) in desired location and level.
- It is recommended to locate at least one wall stud within area where vanity (A) is to be installed. Pre-drill holes through wall studs. Using wood screws, fasten vanity to wall stud.
- NOTE: Wood screws are not provided! Refer to Figure #1.