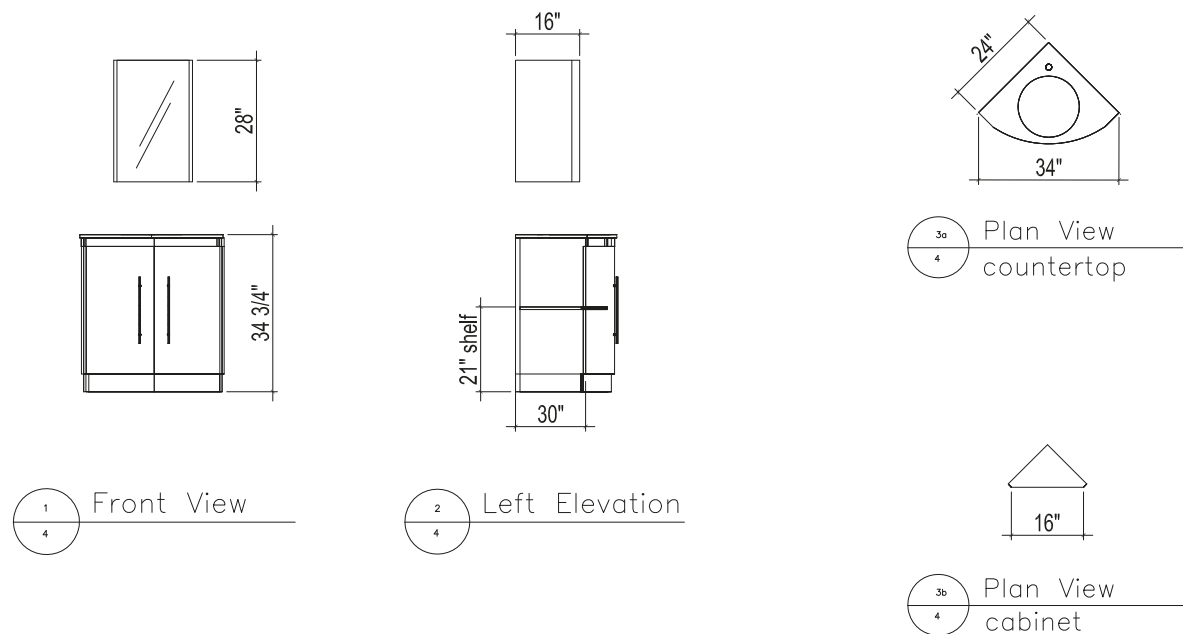


## Roughing-In Dimensions / Mesures Relatives aux Points de Raccordement / Medidas Aproximadas



Note: Height may vary depending on material of top

Note: La hauteur peut varier en fonction du matériau du top

Nota: La altura puede variar dependiendo del material de los mejores



## Recommended Accessories / Accessoires Recommandés / Accesorios Recomendados

- |         |                        |                 |                       |
|---------|------------------------|-----------------|-----------------------|
| - SS 12 | - Recline short faucet | - Bamboo faucet | - Curviz short faucet |
| - SS8   | - BD linen             | - Robo faucet   |                       |

### STEP #1

- With assistance, place vanity (A) in desired location and level.
- It is recommended to locate at least one wall stud within area where vanity (A) is to be installed. Pre-drill holes through wall studs. Using wood screws, fasten vanity to wall stud.
- NOTE: Wood screws are not provided! Refer to Figure #1.