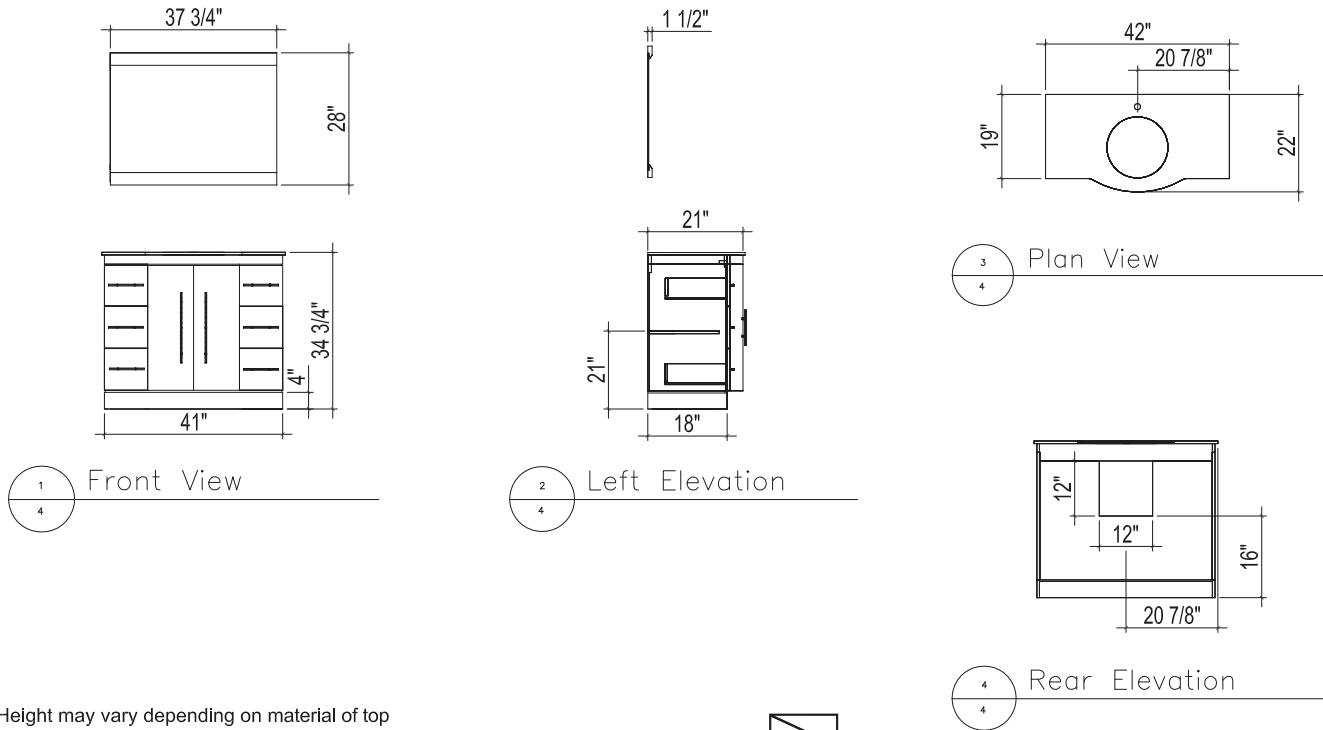


# Roughing-In Dimensions / Mesures Relatives aux Points de Raccordement / Medidas Aproximadas



Note: Height may vary depending on material of top  
 Note: La hauteur peut varier en fonction du matériau du top  
 Nota: La altura puede variar dependiendo del material de los mejores



## Recommended Accessories / Accessoires Recommandés / Accesorios Recomendados

- MCG 22      - MC 19      - SS 12      - Recline short faucet      - Bamboo faucet
- MC 22      - SS8      -BD linen      - Robo faucet      - Curviz short faucet

### STEP #1

- With assistance, place vanity (A) in desired location and level.
- It is recommended to locate at least one wall stud within area where vanity (A) is to be installed. Pre-drill holes through wall studs. Using wood screws, fasten vanity to wall stud.
- NOTE: Wood screws are not provided! Refer to Figure #1.