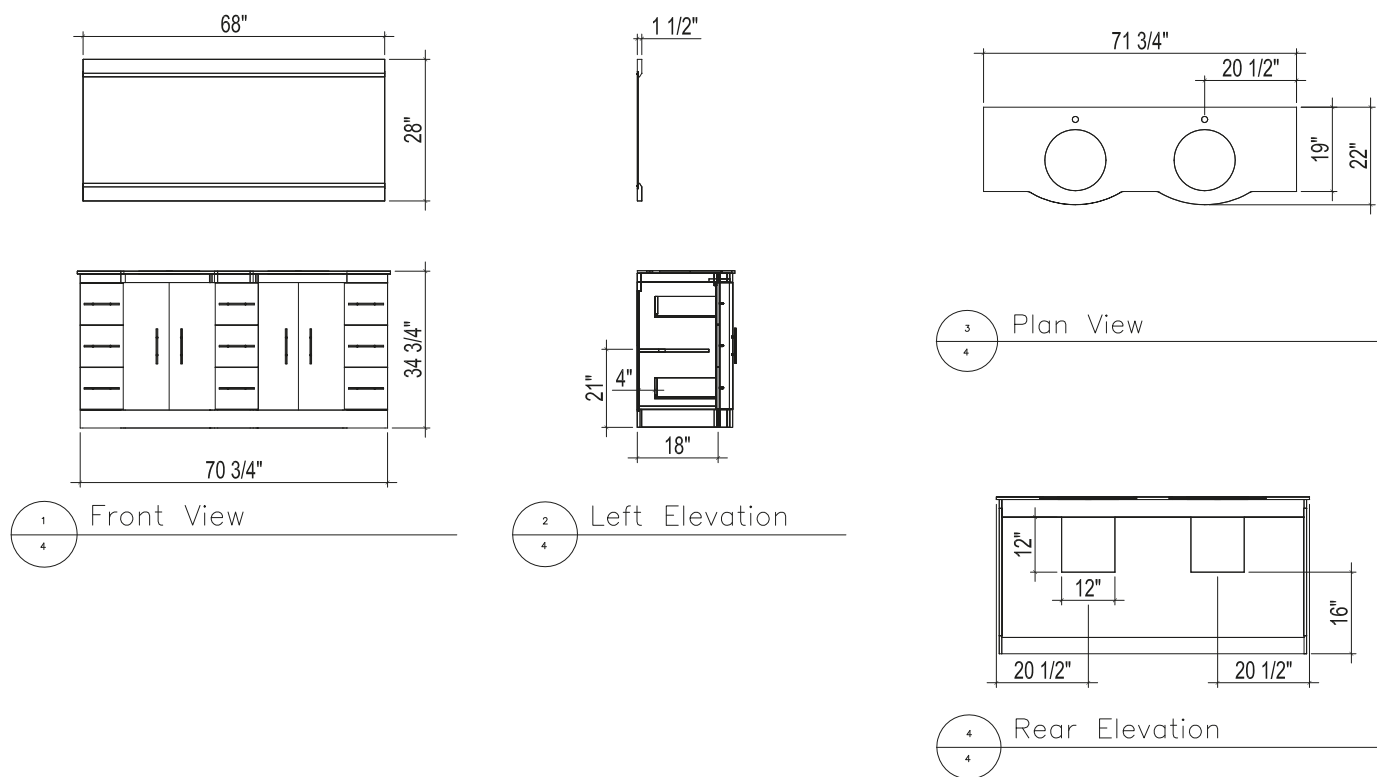


## Roughing-In Dimensions / Mesures Relatives aux Points de Raccordement / Medidas Aproximadas



Note: Height may vary depending on material of top

Note: La hauteur peut varier en fonction du matériau du top

Nota: La altura puede variar dependiendo del material de los mejores



## Recommended Accessories / Accessoires Recommandés / Accesorios Recomendados

- |          |         |           |                        |                       |
|----------|---------|-----------|------------------------|-----------------------|
| - MCG 22 | - MC 19 | - SS 12   | - Recline short faucet | - Bamboo faucet       |
| - MC 22  | - SS8   | -BD linen | - Robo faucet          | - Curviz short faucet |

### STEP #1

- With assistance, place vanity (A) in desired location and level.
- It is recommended to locate at least one wall stud within area where vanity (A) is to be installed. Pre-drill holes through wall studs. Using wood screws, fasten vanity to wall stud.
- NOTE: Wood screws are not provided! Refer to Figure #1.