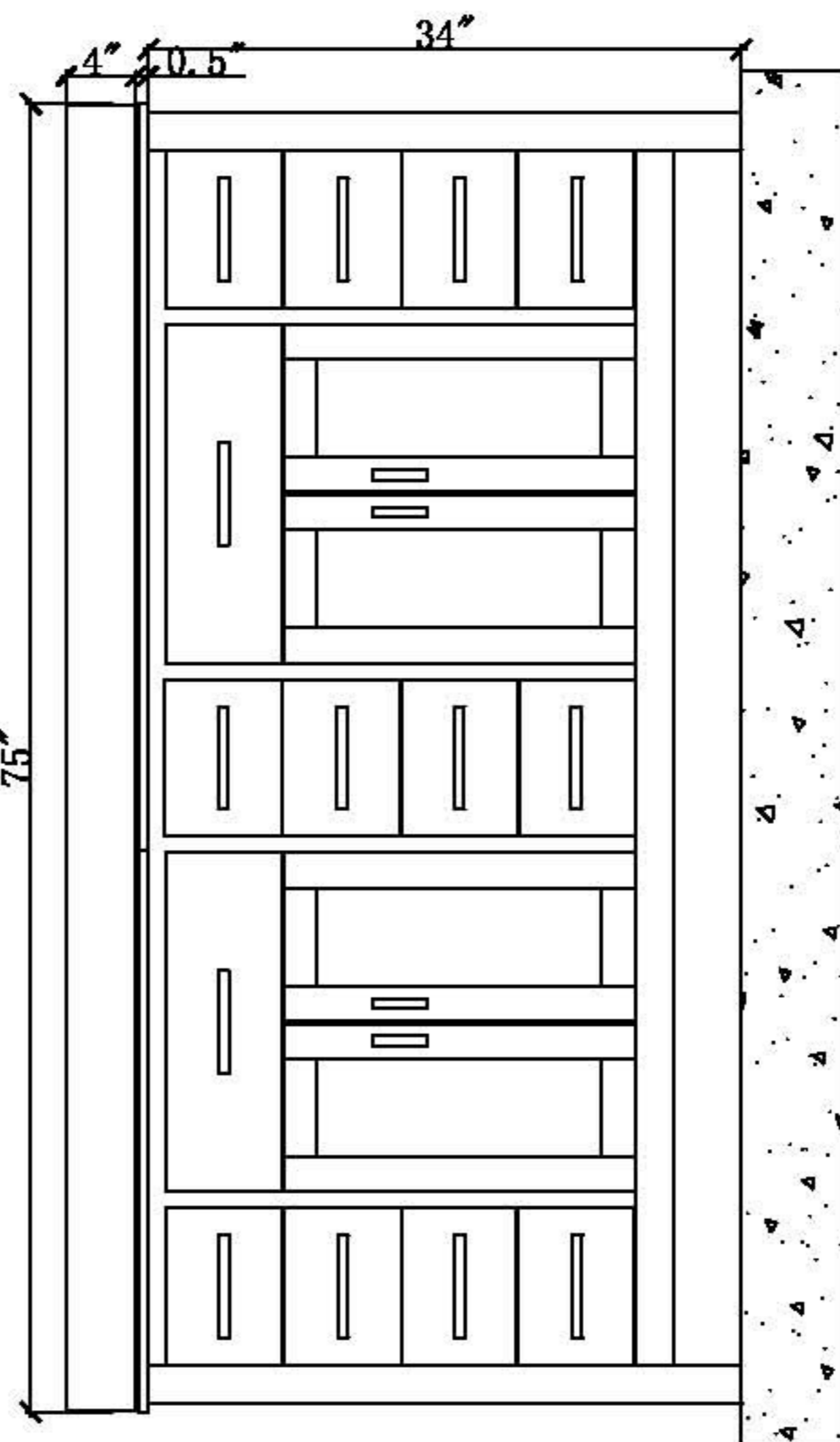
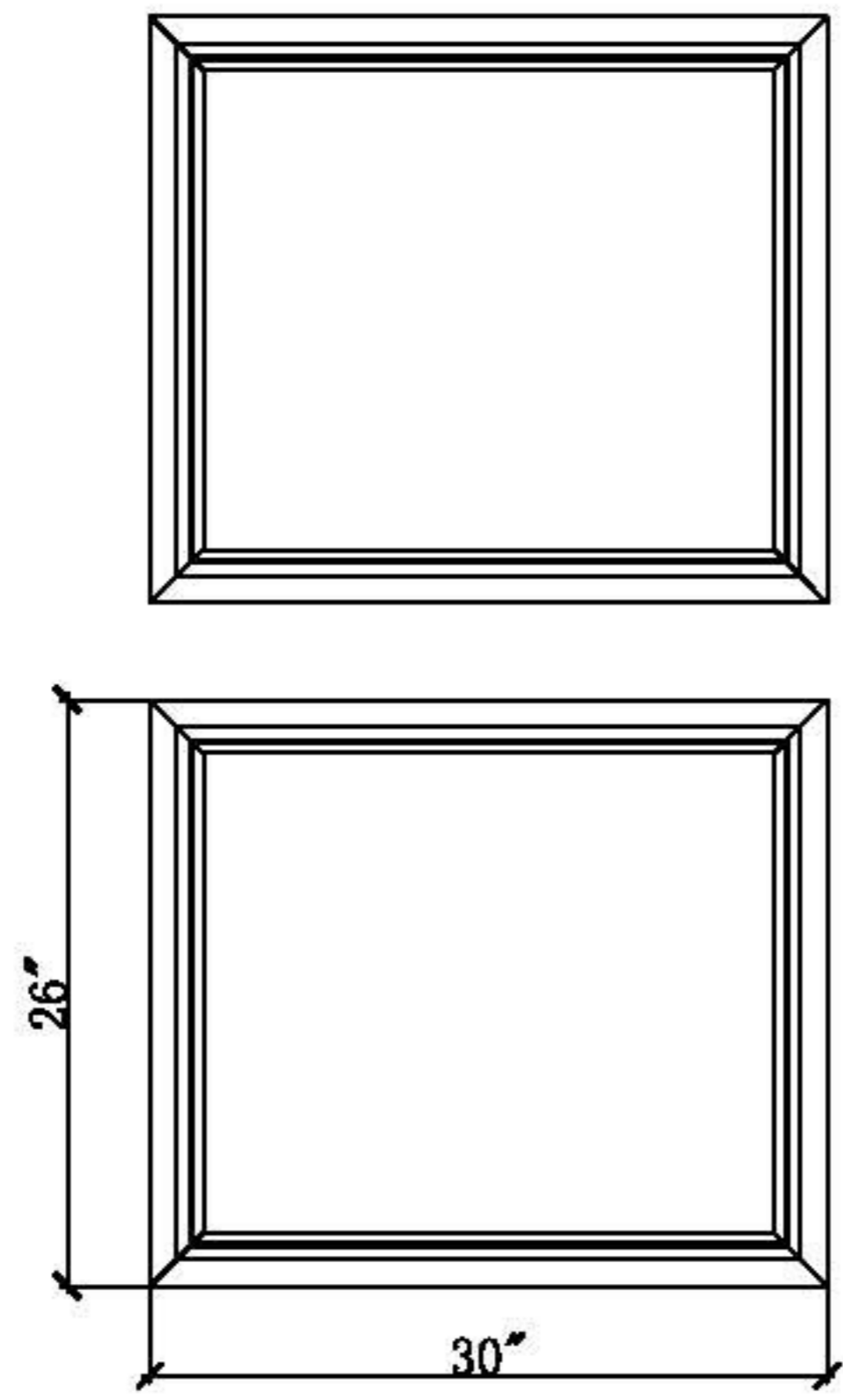
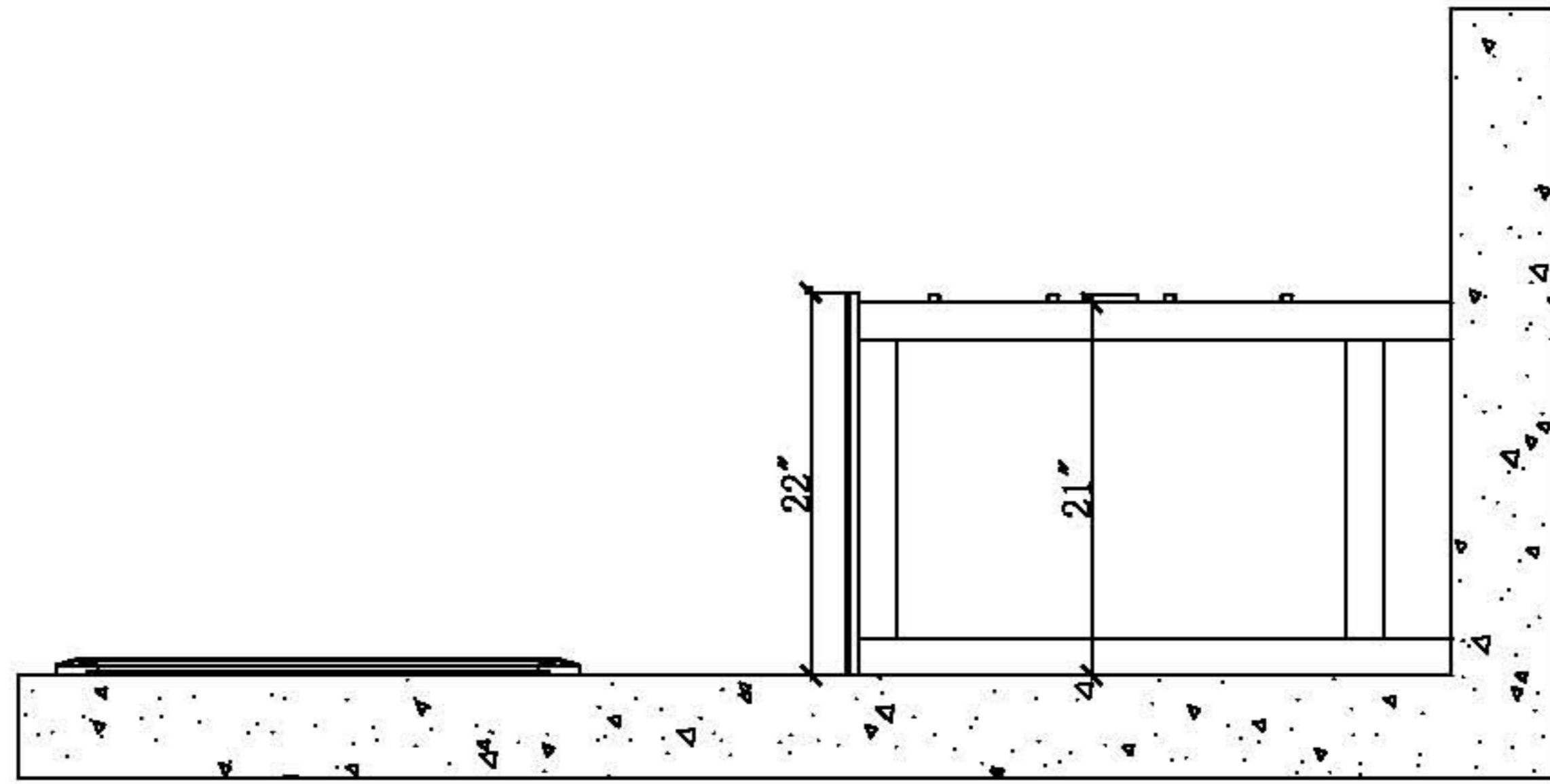


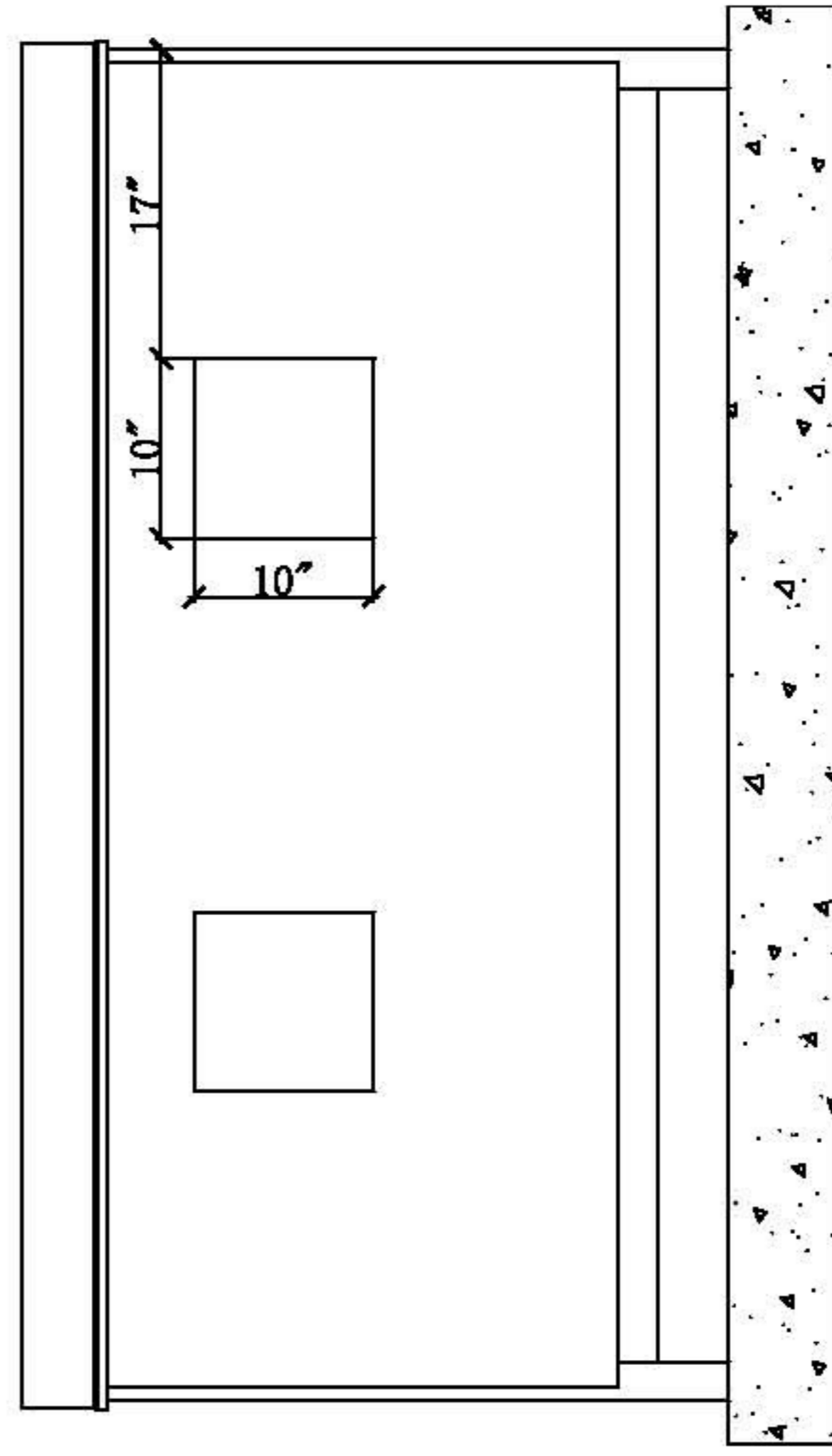
Plan View



Front View

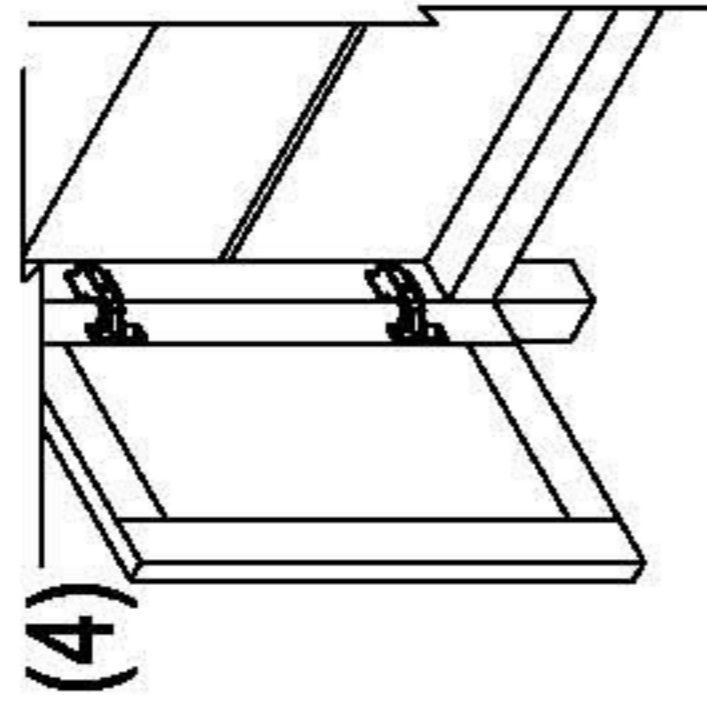
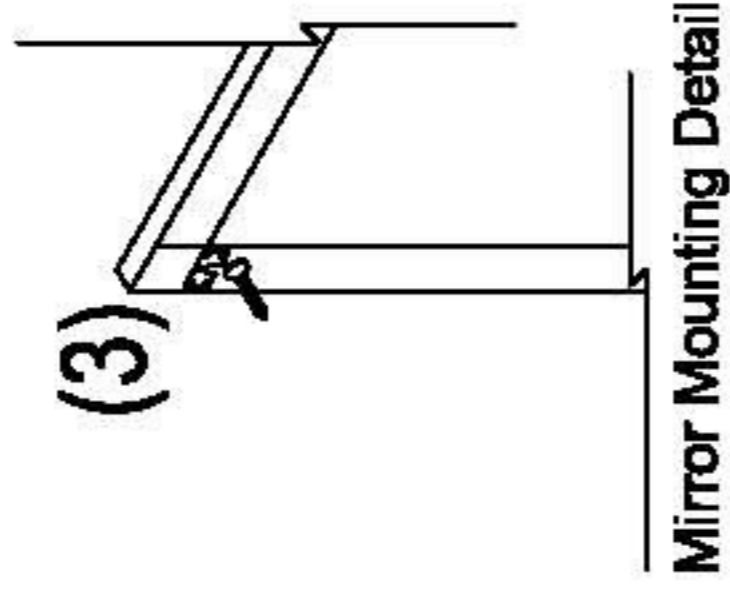
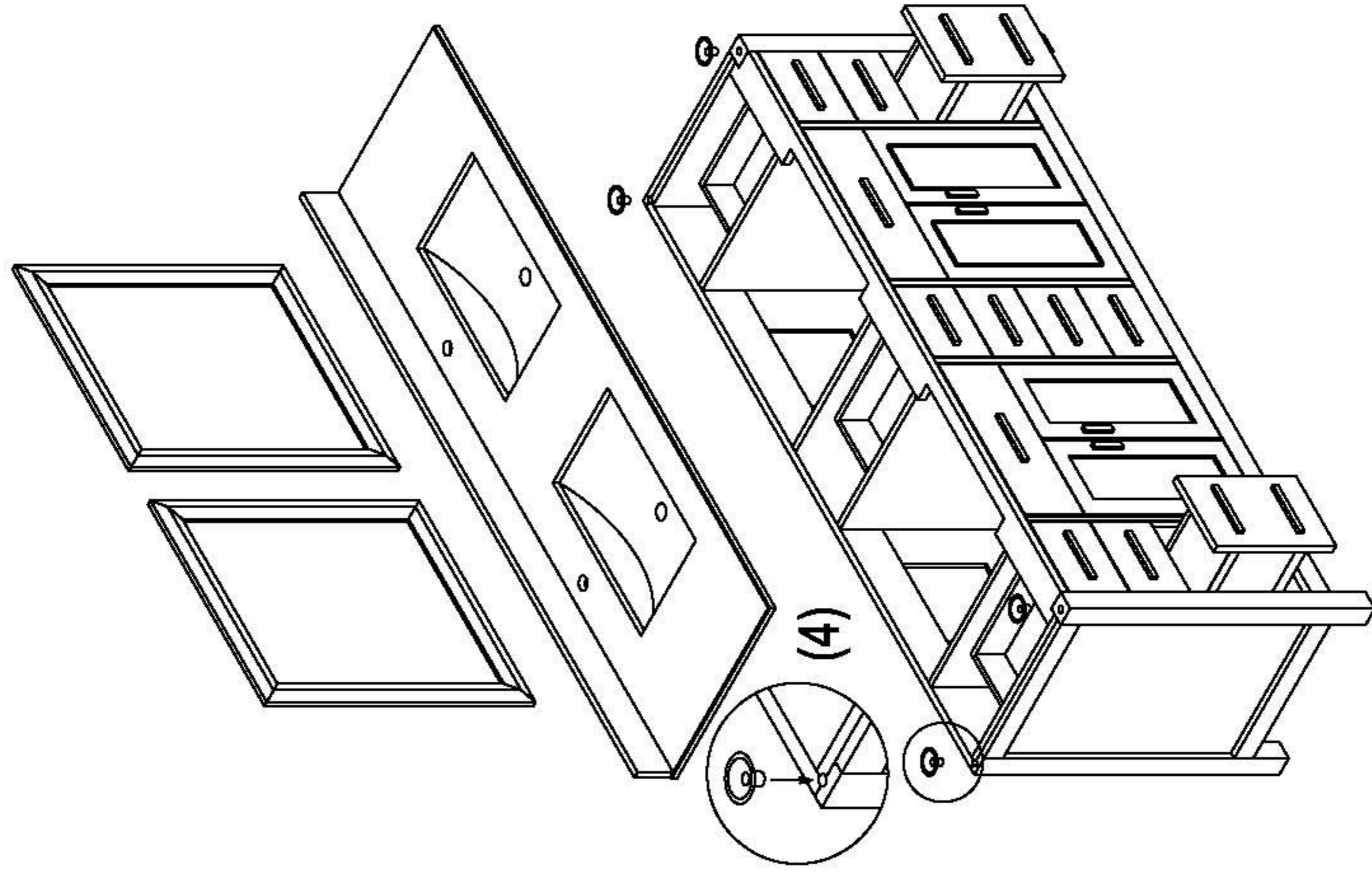


Left Elevation



Rear Elevation

We reserve the right to change the dimensions without notice. We recommend you rough-in the supply-lines and drain after receiving the unit.

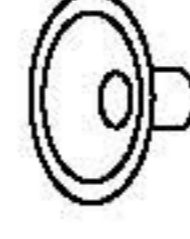


## ASSEMBLY

- (1) Install adjustable feet and level vanity once in final position.
- (2) Remove all handles that are fixed on the inside of the vanity and re-fit them on the outside of the vanity. See *figure*

- (3) Center the countertop on the vanity.

- (4) Adhere countertop to vanity with a bead of silicone. (optional: If suction cups [4x] are present, install them in the corresponding holes on the vanity top) See *figure*.



- (5) Door may become misaligned during transportation. Hinges can be adjusted via the adjustment screws. A qualified tradesperson is recommended to achieve the best results.

**CAUTION**  
**COMPONENTS ARE HEAVY AND MAY REQUIRE TWO PEOPLE TO LIFT. DO NOT STAND OR SIT ON VANITY UNIT**

**USE OF SHARP TOOLS MAY DAMAGE VANITY, PLEASE EXERCISE CARE WHEN REMOVING PACKAGING MATERIALS.**

**PLUMBING FIXTURE MUST BE INSTALLED BY A QUALIFIED PLUMBER AND IN COMPLIANCE WITH YOUR LOCAL BUILDING CODES.**

