

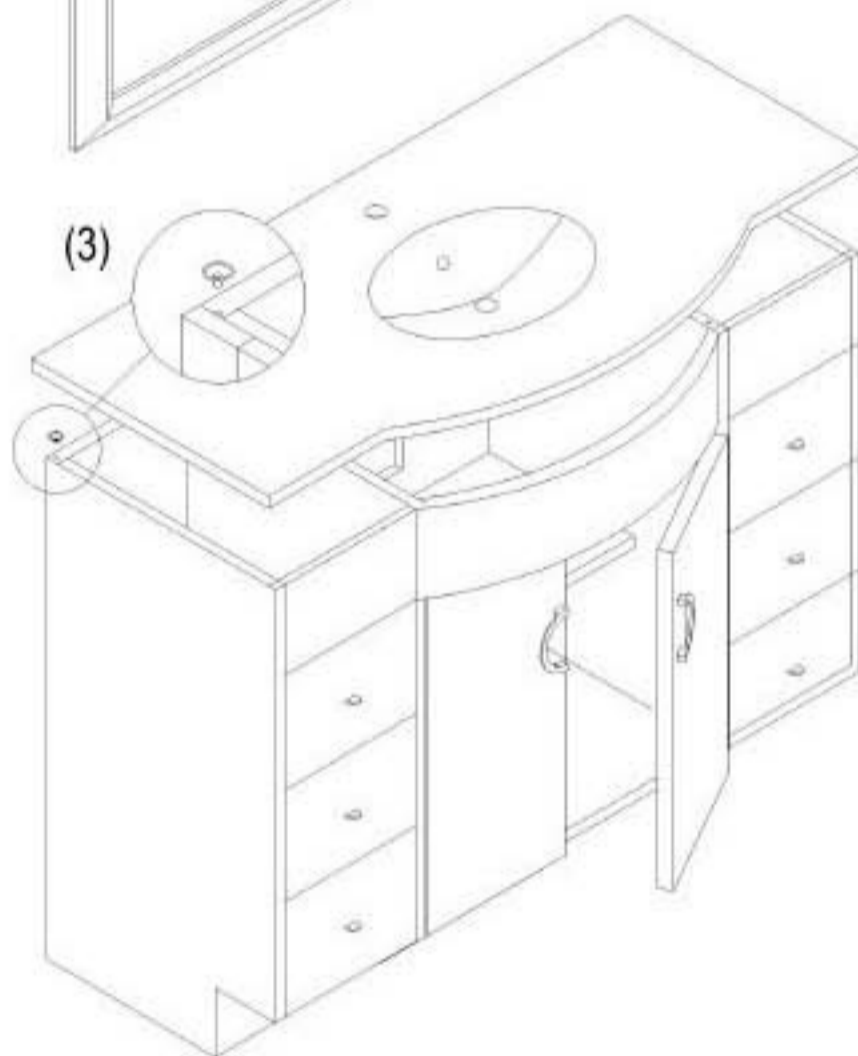
**CAUTION**  
 COMPONENTS ARE HEAVY AND MAY  
 REQUIRE TWO PEOPLE  
 TO LIFT. DO NOT STAND OR SIT ON  
 VANITY UNIT

USE OF SHARP TOOLS MAY DAMAGE  
 VANITY, PLEASE EXERCISE CARE WHEN  
 REMOVING PACKAGING MATERIALS.

PLUMBING FIXTURE MUST BE  
 INSTALLED BY A QUALIFIED PLUMBER  
 AND IN COMPLIANCE WITH YOUR LOCAL  
 BUILDING CODES.



### ASSEMBLY



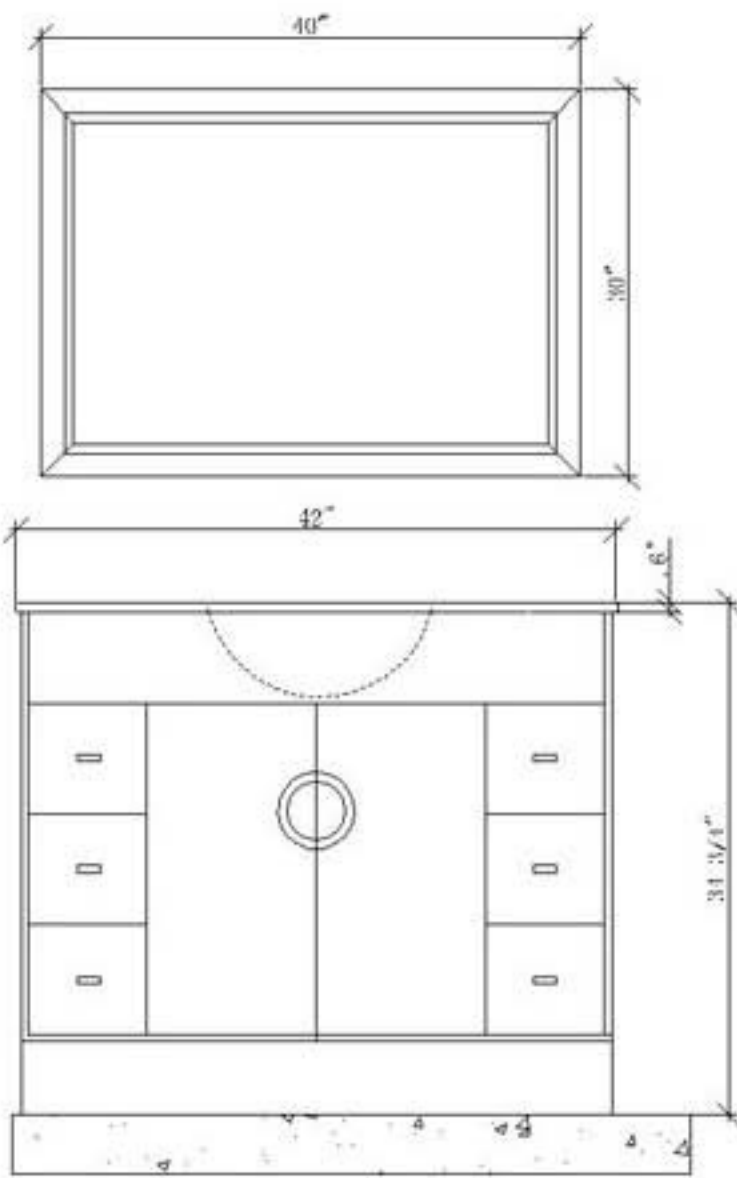
(1) Install adjustable feet and level vanity  
 once in final position.

(2) Center the countertop on the vanity.

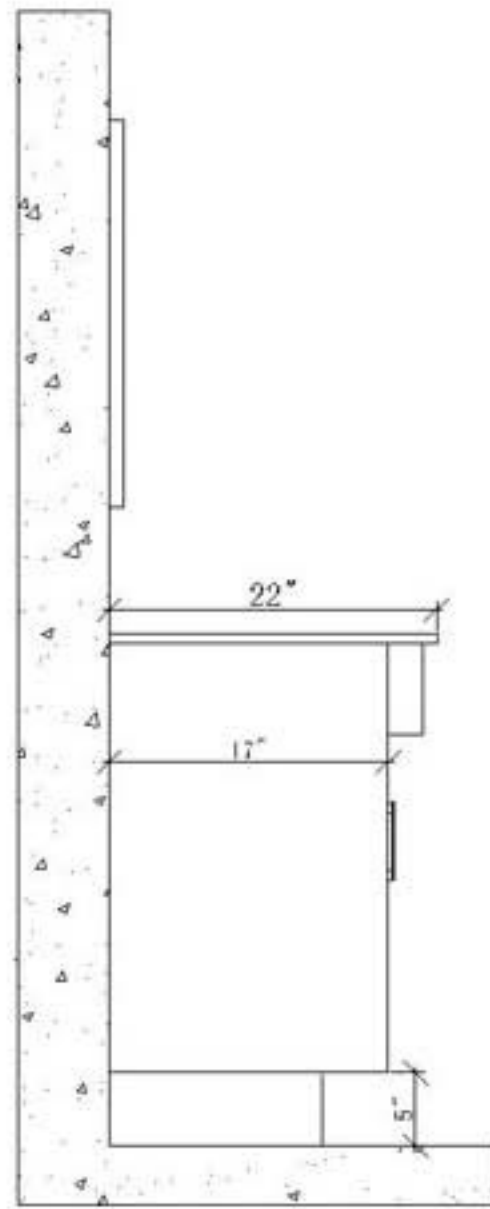
(3) Adhere countertop to vanity with a bead  
 of silicone. (optional: If suction cups [4x] are  
 present, install them in the corresponding  
 holes on the vanity top) See figure.



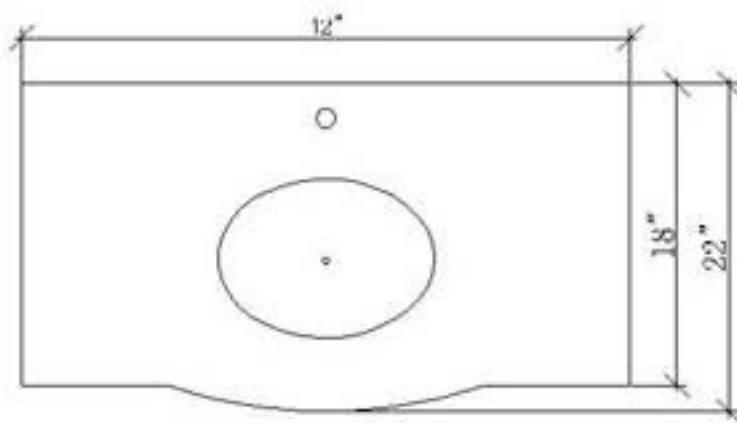
(4) Door may become misaligned during  
 transportation. Hinges can be adjusted via  
 the adjustment screws. A qualified  
 tradesperson is recommended to achieve  
 the best results.



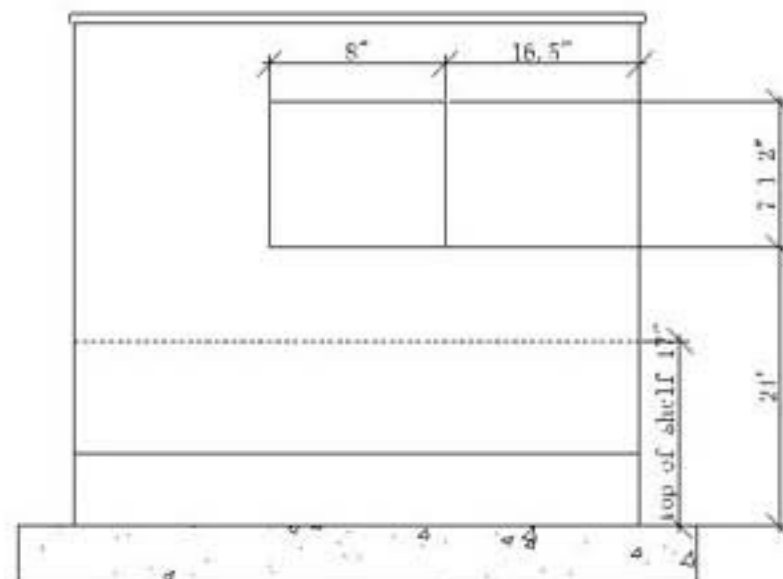
Front View



Left Elevation



Plan View



Rear Elevation

We reserve the right to change the dimensions without notice.  
 We recommend you use your actual unit for rough-in the supply-lines and drain.

# Marble / Granite Care

The best method for cleaning marble is to use a clean terry cloth and lukewarm water.

If something does spill on the marble, wipe it up as soon as possible for the very best results.

We recommend re-sealing your stone approximately every 18 months with StoneSpecific penetrating sealers. These products can be found at The Home Depot nationwide

STONE § SPECIFIC™

